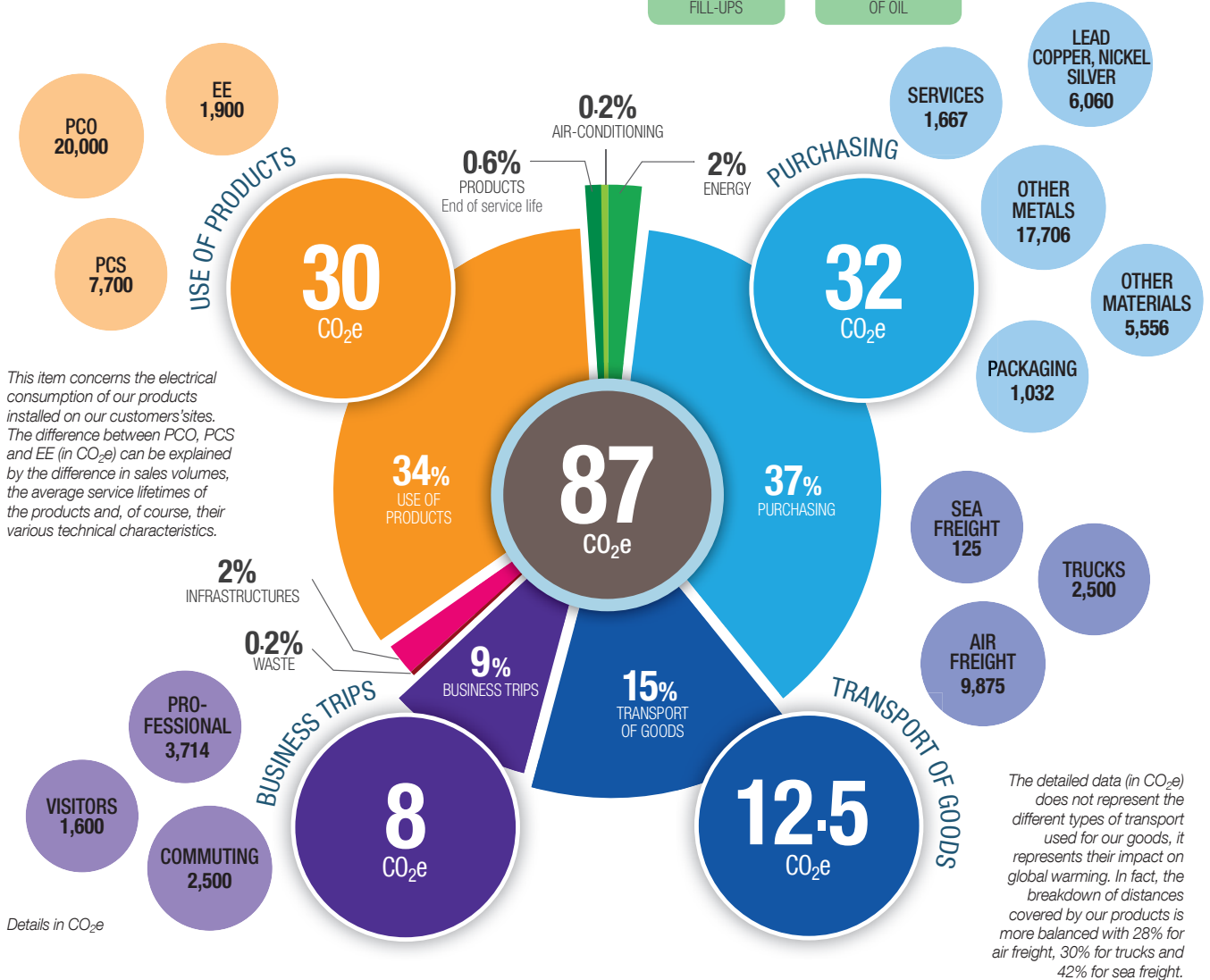


Summary of Socomec's carbon footprint (2016 data, pilot scope: Socomec SAS France)

SOCOMECC EMISSIONS IN FRANCE IN 2016: 87,000 CO₂e =

700,000
CAR PETROL TANK
FILL-UPS

60 MUNICIPAL
SWIMMING POOLS
OF OIL



Details in CO₂e

To find out more

CO₂e (CO₂ equivalent): CO₂ is not the only gas that increases the greenhouse effect. Methane, nitrous oxide (N₂O), industrial gases and even water vapour contribute to global warming, and a ton of CO₂ has not the same effect as a ton of N₂O. For simplicity, we speak of an equivalent ton of CO₂: 1 CO₂e represents a set of greenhouse gases that have the same effect on the climate as a ton of CO₂. For example, 2 CO₂e is like making a return plane trip from Paris to New York or to cover 6,000 km in urban areas or burn 7,200 kWh of natural gas (a few months of heating for a house)...

The carbon footprint for a French citizen is on average 10 CO₂e per year.



A Group-level partnership

The methodological support for calculating our Carbon footprint was provided by H3C Energies, an entity of the E'nergys Group.

