

COUNTIS AMd COUNTIS AMt

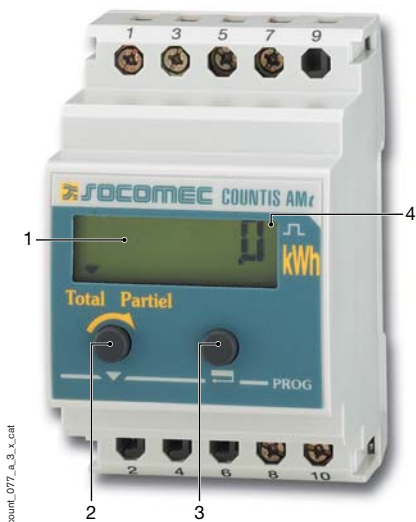
Energy
metering

COUNTIS AM10
COUNTIS Adc
COUNTIS AMd / COUNTIS AMt
COUNTIS ATv2 / COUNTIS ATiv2
COUNTIS ATd
COUNTIS ATPv2
COUNTIS Ci



COUNTIS AMd dual tariff 32 A direct connection

1. kWh displays.
2. Button for total and partial meter display or to scroll through parameters.
3. Tariff visualisation key (t1, t2), validation and parameter scrolling button.
4. Pulsed LCD indicates active consumption (10 Wh/pulse).



COUNTIS AMt 100 A CT connection

1. kWh displays.
2. Button for total and partial meter display or to scroll through parameters.
3. Parameter and validation scrolling button.
4. Pulse LCD indicates active consumption (10 Wh/pulse).

Functions

The **COUNTIS AM** is a modular active energy meter designed for single phase networks.

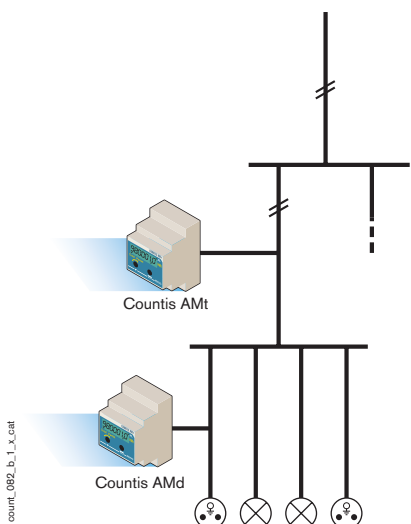
This product is available in two versions:

- the **AMd**: used for direct connections up to 32 A,
- the **AMt**: used for connections up to 100 A via a current transformer.

Conformity to standards

- IEC 61036 class 1
- IEC 61010-1
- IEC 61000-4-2
- IEC 61000-4-3
- IEC 61000-4-4
- IEC 61000-4-5
- IEC 61000-4-6
- IEC 61000-4-8
- IEC 61000-4-11
- IEC 60068-2-6
- IEC 60068-2-11
- IEC 60068-2-30

Applications



The dual tariff **COUNTIS AMd** is equipped of two totalling counters (t1, t2) allowing a direct reading in kWh and a pulse output as standard. Two partial counters (t1, t2) with RESET will allow to count the energy on a specific period.

The **COUNTIS AMt** include a totalising meter, for direct reading in kWh and a pulse output as standard. A partial meter (with RESET) enables totalisation of energy for specific time periods.

These two versions can be fully configured by the user via the keypad and display (CT [for AMt] ratio, pulse duration and RESET of the partial counter).

Furthermore, associated with a **COUNTIS Ci**, a consumption centralisation will be possible via a PLC or the **CONTROL VISION** software.



References



**COUNTIS AMd
dual tariff**



COUNTIS AMt

Connections	Reference	Reference
Direct 32 A dual tariff	4851 0002	
On CT 5 A		4851 0001

Electrical characteristics

Current measurement (TRMS)

Type	non-insulated CT
CT primary	25, 40, 50, 75 and 100 A (AMt) / 32 A direct input (AMd)
CT secondary	5 A (AMt)
Input consumption	2.5 VA (AMt) / 1 VA (AMd)
Overload	30 I _{max} for 10 ms (AMd) / 20 I _{max} for 500 ms (AMt)
Minimum measured current	100 mA (AMd) / 15 mA (AMt)

Voltage measurement (TRMS)

Range of measurement	184 ... 276 VAC
Input consumption	≤ 15 VA
Sustained overload	289 VAC
Consumption	≤ 15 VA

Energy accuracy

Active (according to IEC 61036)	Class 1
---------------------------------	---------

Auxiliary power supply

Self-supplied	yes
Frequency	50 / 60 Hz

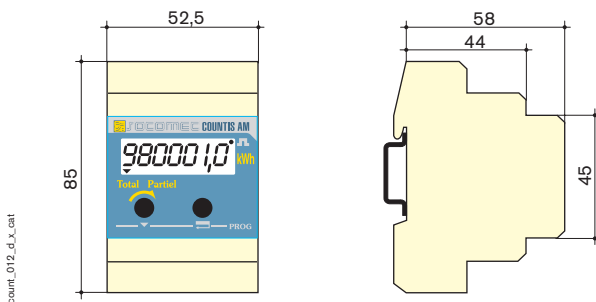
Output (pulsed)

Number	1
Type reed relay	100 VDC - 0.5 A - 12 VA
Fixed weight of impulses	100 Wh
Impulse duration	60 ... 900 ms
Max. number of operations	5 x 10 ⁷

Operating conditions

Operating temperature	-5 ... +45 °C
Storage temperature	-20 ... +70 °C
Relative humidity	85 %

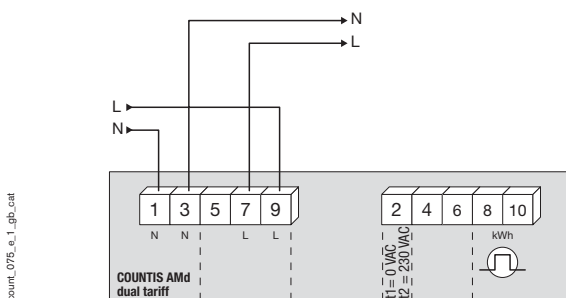
Overall dimensions



Type	modular
Number of modules	3
Dimensions W x H x D	52.5 x 85 x 58 mm
Case protection rating	IP20
Front protection rating	IP40
Display type	LCD 6+1 digits
Rigid cable connection section	10 mm ²
Flexible cable connection section	6 mm ²
Weight	300 g

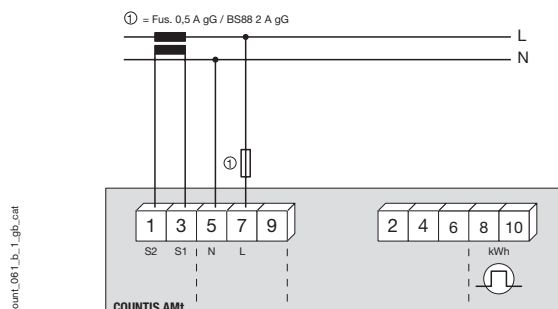
Terminal connections

• COUNTIS AMd dual tariff



- 1 & 9: network voltage inputs
2: tariff change input
4 & 6: unused
3 & 7: network voltage outputs to supply load
5: unused
8 & 10: pulse outputs

• COUNTIS AMt



- 1 & 3: current inputs
2 & 4 & 6: unused
5 & 7: voltage inputs
9: unused
8 & 10: pulse outputs