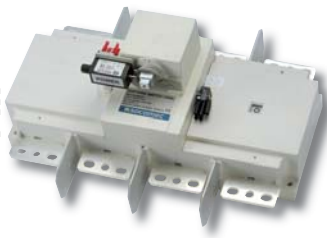
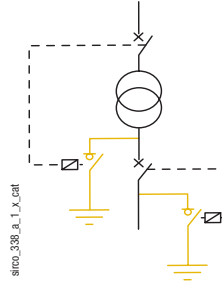


SIRCO for earthing

sirco_3183_a_2_cat



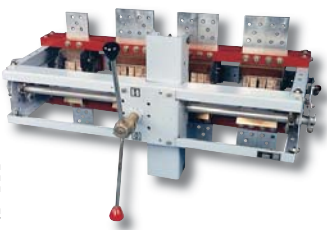
- From 800 to 1800 A.
- 50 kA eff. 1 s.
- Special S4 type handle.
- Undervoltage coil interlocking.



sirco_3381_a_1_x_cat

CMP

cmp_003_b_2_cat



Function

CMP are manually operated high power load-break switches from 2500 to 5000 A with optional remote tripping.

Available on request

- X poles.
- Tripping coil.

General characteristics

- Safety isolation by fully visible breaking.
- High thermal and dynamic withstand.
- Easy to use for large flat busbars.

Motorised SIRCO based on an ATyS motorised switch

sirco_343_a_1_cat



Function

Remote controlled, they ensure making and breaking on load and security breaking of any low voltage electrical circuit.

References

Rating (A)		125	160	250
No. of poles	Power supply voltage	Reference	Reference	Reference
3 P	230 VAC	1915 3012 ⁽¹⁾	1915 3016 ⁽¹⁾	1915 3025 ⁽¹⁾
4 P	230 VAC	1915 4012 ⁽¹⁾	1915 4016 ⁽¹⁾	1915 4025 ⁽¹⁾

⁽¹⁾ Other voltages 12, 24 VDC: consult us.

Rating (A)		400	630	800
No. of poles	Power supply voltage	Reference	Reference	Reference
3 P	230 VAC	1915 3040 ⁽¹⁾	1915 3063 ⁽¹⁾	1915 3080 ⁽¹⁾
4 P	230 VAC	1915 4040 ⁽¹⁾	1915 4063 ⁽¹⁾	1915 4080 ⁽¹⁾

⁽¹⁾ Other voltages 12, 24 VDC: consult us.

Rating (A)		1 000	1 250	1 600
No. of poles	Power supply voltage	Reference	Reference	Reference
3 P	230 VAC	1915 3100 ⁽¹⁾	1915 3120 ⁽¹⁾	1915 3160 ⁽¹⁾
4 P	230 VAC	1915 4100 ⁽¹⁾	1915 4120 ⁽¹⁾	1915 4160 ⁽¹⁾

⁽¹⁾ Other voltages 12, 24 VDC: consult us.